

# VILLA & CASA

Ref. 5380



VILLA & CASA



Ref. 5380 |

LEPING  
VENDITE

PÕRAND  
1/2

HIND  
€ 1.500.000

PIND  
600 RUUTMEETRIT

ENERGIAREITING  
A : 111,78 KWH/M<sup>2</sup>A

KÜTE  
AUTONOMO

MAGAMISTOAD  
4

VAATA SAIDIL

VANNITOAD  
5

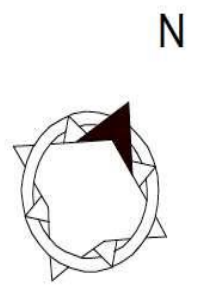
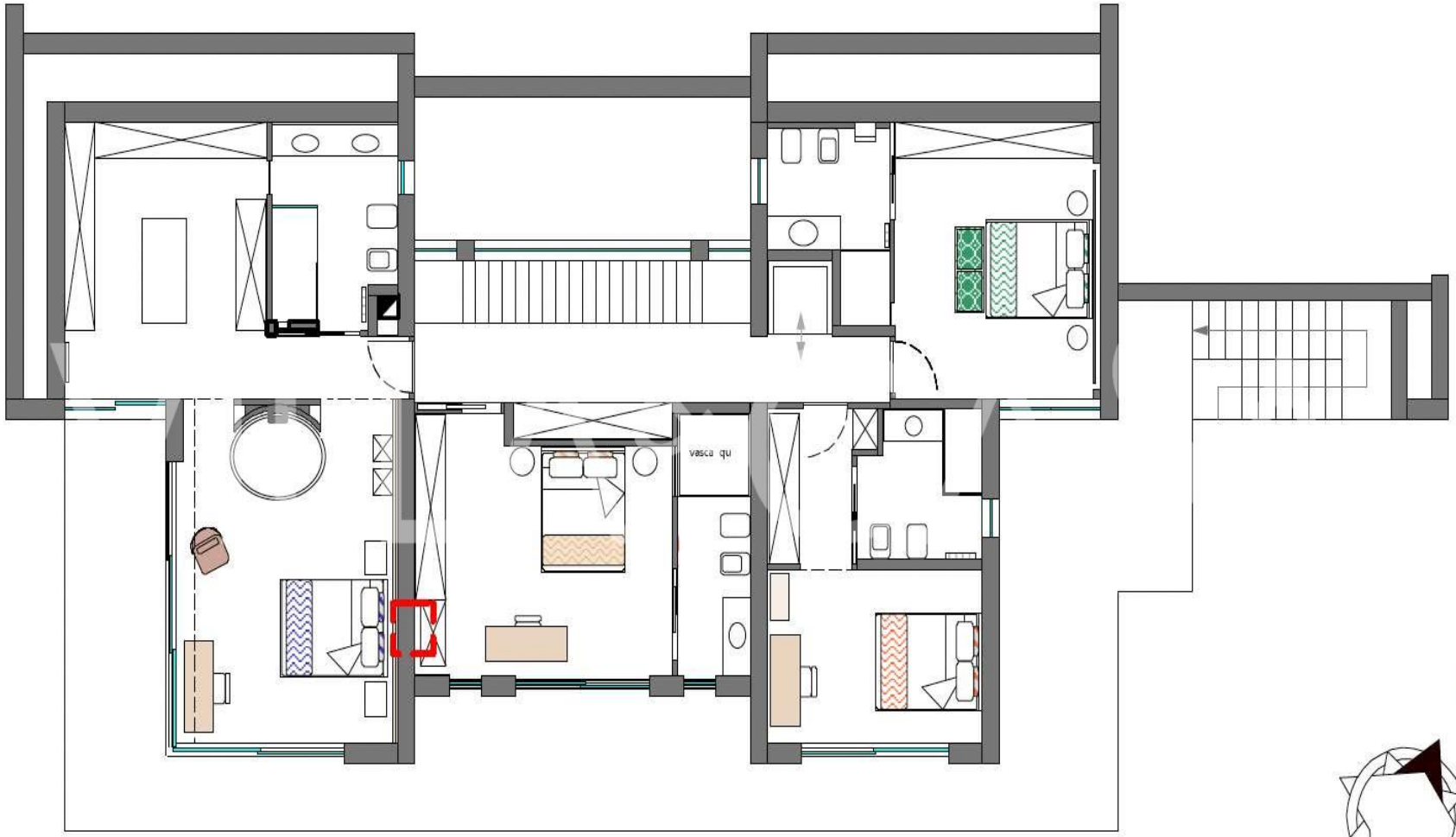
## ÜKSIKASJAD

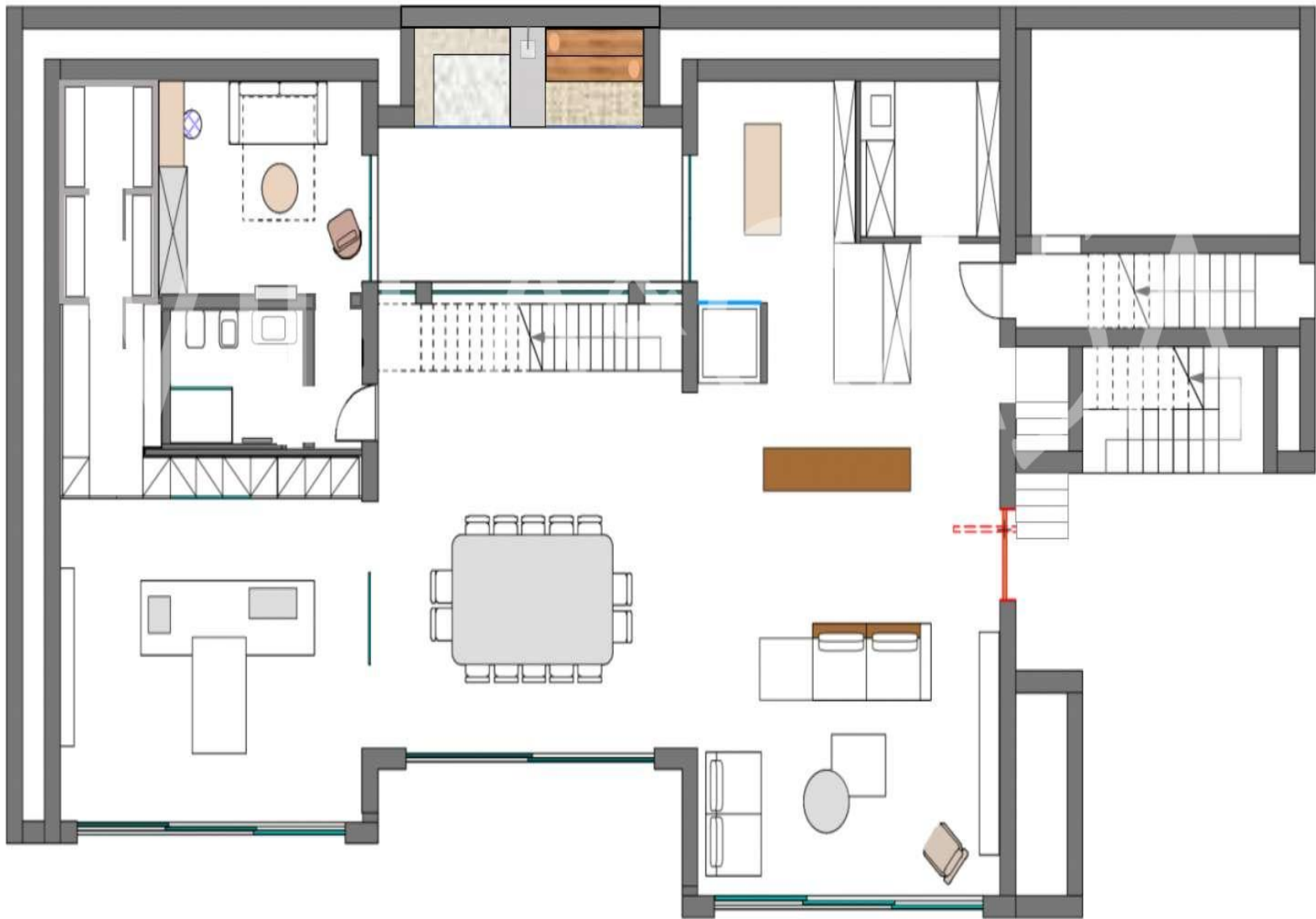
Signaliseerimine, Õhukonditsioneer, Sisseehitatud riidekapid, Lift, Vann, Rõdu, Baar, Šašlõkk, grill, Kelder, Dušš, Garaaž, Aed, Internet, Jõusaal, Bassein, parkimine, Terrass, merevaade, mäevaade



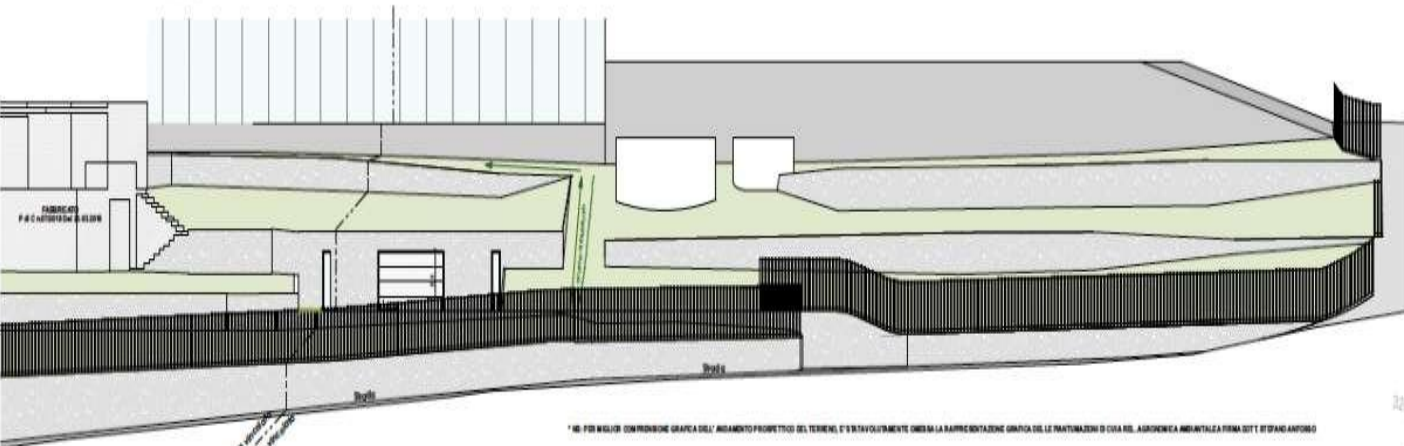
VILLA & CASA







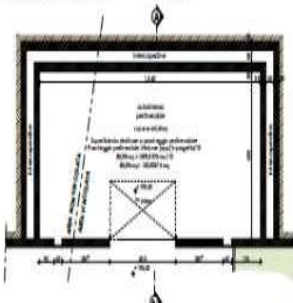




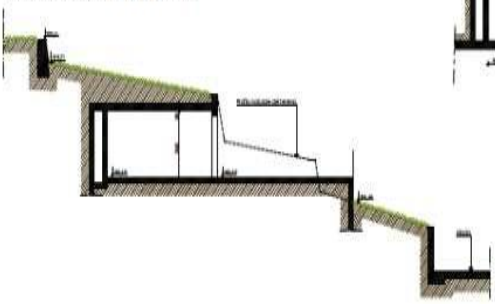
\* NB. PER MIGLIOR COMPRESIONE GRAFICA DELL'ANDAMENTO PROSPETTICO DEL TERRENO, E' STATO VOLUNTARIAMENTE OMESSA LA RAPPRESENTAZIONE GRAFICA DELLE PIANIFICAZIONI DI CUIA DEL SUDDETERMINA AMBIENTALE PRIMA DOTT. STEFANO ANTONIO

TABELLA VEGETAZIONALE


PIANTA BOX AUTO scala 1:100



SEZIONE PAESAGGISTICA scala 1:100



PLANIMETRIA GENERALE scala 1:200



**Legenda**

- : linea area vincolata
- : confini catastali
- : mapp. poli. catastali
- : fabbricati
- : confine lotto

VILLA & CASA

milano@azarovs.com

ITALIA, MILANO

Via Manlio ja Gioacchino Savarè n. 1  
(+39) 0184639032    (+39) 3884227146